

Materiali da Proteine

BIOECONOMY DIALOGUES 2025 SECOND EDITION

28 October 2025 / 10:00 - 16:30

POLITECNICO DI MILANO

DEPARTMENT OF CHEMISTRY, MATERIALS AND CHEMICAL ENGINEERING "GIULIO NATTA"
AULA "G. NATTA"

ON LINE ON YOUTUBE

@SOCIETACHIMICAITALIANA2020

Scientific and Organizing Committee

M. GALIMBERTI, E. FASOLI, V. BARBERA

9:30 REGISTRATION OF PARTICIPANTS

10:00 INTRODUCTION

M. Galimberti (Politecnico di Milano, SCI),
Sergio Riva (CNR, LGCA)

**10:15 SCALING UP NEW EXTRACTION TECHNOLOGIES:
HIGH-VALUE PROTEIN EXTRACTS FROM
INDUSTRIAL RESIDUES**

Giancarlo Cravotto (Università di Torino)

10:40 SUPRAMOLECULAR UPCYCLING OF PROTEIN MATERIALS

Pierangelo Metrangolo (Politecnico di Milano)

11:05 UPCYCLING PROTEINS FROM MARINE RESOURCES

Giovanni Perotto

11:30 COFFEE BREAK

**11:50 PEPTIDE-ENRICHED MATERIALS FROM RAPESEED
MEAL PROTEIN: STRUCTURAL VALORIZATION
STRATEGIES AND PROPERTIES. IMPROVEMENT
FOR A CIRCULAR ECONOMY**

Sara Aquila (Università di Firenze)

**12:15 AMYLOID-LIKE SELF-ASSEMBLING OF PROTEINS
FROM BLACK SOLDIER FLY AND BIOPLASTICS
OBTAINED THEREFROM**

Davide Gentile (Politecnico di Milano)

**12:40 SERICIN NANOFIBERS: FROM BYPRODUCT
TO INNOVATIVE RESOURCE FOR COSMETICS.**

Antonino Natalello (Università di Milano Bicocca)

13:05 LUNCH

*In the lunch break: Presentation of the Interdepartmental
Laboratory CELLS of Politecnico di Milano.*
Simone Vesentini

**14:25 NANOSTRUCTURED COMPOSITES OF 2D MATERIALS
AND PROTEINS: A PATENT LANDSCAPE ANALYSIS**

Massimo Barbieri (Politecnico di Milano)

**14:50 NATURAL-SYNTHETIC HYBRID PROTEIN MATERIALS:
PREPARATION, CHARACTERIZATION, AND
BIOMEDICAL APPLICATIONS**

Monica Bertoldo (Università di Ferrara)

**15:15 WHERE SCIENCE MEETS MARKET: SPLASTICA'S
MISSION TO SCALE PROTEIN-BASED INNOVATION**

Emanuela Gatto (Splastica)

**15:40 KERATIN AND INNOVATION: KERLINE'S JOURNEY
FROM RESEARCH TO MARKET**

Giovanna Sotgiu (Kerline)

**16:05 FROM BLUE CRAB TO BIOPOLYMERS:
VALORIZATION OPPORTUNITIES OF PROTEIN-RICH
SIDE STREAMS IN THE CHITIN/CHITOSAN VALUE CHAIN**

Sara De Carolis (Biochica)

16:30 CONCLUSION

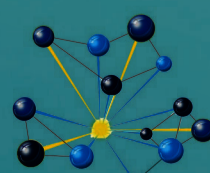
In cooperation with



**POLITECNICO
MILANO 1863**



Cluster italiano della Bioeconomia circolare



VANGUARD INITIATIVE
New growth through smart specialisation



**Sostenibilità
in Lombardia**

Il Cluster LGCA aderisce al Protocollo lombardo per lo sviluppo sostenibile